

LUMBER JANE

1024

For Upholstery Application



Specifications:

Content: 100% Wool

Finish: None

Custom Finishes Available:

Alta© Finishes

Greenshield ©

Nanotex ©

Width: 61"

Repeat: 2.5"H 2.75"V

Abrasion: 50,000 Double Rubs (Wyzenbeek)

Flammability: CAL 117-2013

Lightfastness: 40+ hours

Weight: 24 oz/lyd

Cleaning: S

Clean with mild, water-free dry cleaning solvent.

Origin: Germany

Warranty: 2 Years*

*See Anzea Warranty Information

Environmental:

REACH Compliant

Contains Bio-Based Materials

FR Free

No Added Finishes

An Anzea Design Team Collection



01 Shetland Pony



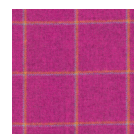
02 Brownie



03 Pents



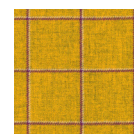
04 Purple Fairy



05 Giantess



06 Kilt



07 Log Jam



08 Scout Camp



09 Sprite



10 Rosie



11 Khaki Kotes



12 Babe the Blue



13 Standing Stone



14 Selkie

Tested for Upholstery Application



ACT registered certification marks