

ROSEUS REGATTA

8807

For Upholstery and Wall* Applications

TOO CLOSE TO CALL COLLECTION

The TOO CLOSE TO CALL collection has superior breathability achieved through a specially engineered nylon fiber matrix construction. These products contain no PVC or plasticizers and do not emit off-gases. The manufacturing process utilizes the latest technology to capture any airborne particles and recycles them in the form of heating fuel.

PUNCTURE RESISTANT

Specifications:

Content: Nylon Matrix Construction

Width: 54"

Repeat: None

Abrasion: 300,000 Double Rubs (Wyzenbeek)*

Lightfastness: 100 Hours

Weight: 10.5 oz/ly

Flammability: CAL 117-2013

*May be treated to pass the ASTM-E84 for wallcovering application

Cleaning: W/S

Bleach Resistant: 9:1 Diluted Bleach Solution

Rinse thoroughly after cleaning or disinfecting.

Origin: USA

Warranty: 3 Years*

*See Anzea Warranty Information

Environmental:

REACH Compliant

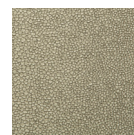
Free of Formaldehyde, Phthalates and Heavy Metals

Free of Anti-Microbial and Anti-Bacterial Additives

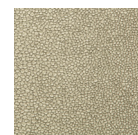
No FR Additives

**Multiple factors affect fabric durability and appearance retention, including end-user application and proper maintenance. Wyzenbeek results above 100,000 double rubs have not been shown to be an indicator of increased fabric lifespan.*

ANZEA.



01 Light Sage



02 Celedon



03 Sparkling Sand

Tested for Upholstery Application



ACT registered certification marks